



# SAINT LUCIA ECONOMIC RECOVERY AND RESILIENCE PLAN

MOVING FROM PANDEMIC TO RECOVERY  
WITH COLLECTIVE ACTION





# Saint Lucia Economic Recovery and Resilience Plan



# Contents

Prime Minister's Remarks.....	5
Introduction.....	8
Snapshot of Saint Lucia's Economic Recovery and Resilience Plan .....	11
Budget.....	13
Economic Recovery Pillars	
<b>Pillar 1</b> .....	<b>15</b>
Stimulating the Economy.....	16
Context.....	16
Policy Interventions .....	17
<b>Pillar 2</b> .....	<b>22</b>
Fast-Tracking Shovel Ready Capital Investment Projects.....	23
Context.....	23
Policy Interventions.....	24
<b>Pillar 3</b> .....	<b>26</b>
Strengthen Social Protection System in Saint Lucia.....	27
Context.....	27
Policy Interventions.....	28
<b>Pillar 4</b> .....	<b>31</b>
Resilience Building of the Productive Sector.....	32
Context.....	32
Policy Interventions.....	33
<b>Pillar 5</b> .....	<b>37</b>
Build Resilience into the Health Sector.....	38
Context.....	38
Policy Interventions.....	39
<b>Pillar 6</b> .....	<b>42</b>
Disaster Risk, Mitigation and Climate Change.....	43
Context.....	43
Policy Interventions.....	44
Monitoring Framework.....	45
Acknowledgement.....	46
<b>Technical Planning Team</b> .....	<b>48</b>
<b>Appendices</b>	
Overview of Saint Lucia's COVID-19 Response Strategy.....	49
Phase 1: National Public Health Response .....	50
Phase 2: Social Stabilization Plan .....	51



# Prime Minister's Remarks



**T**he COVID-19 virus which was declared a pandemic by the World Health Organization on March 11th, 2020 is without equal the most challenging event that the world collectively has had to confront since the great depression, let alone a small vulnerable island developing state like Saint Lucia. This pandemic is unprecedented and multidimensional in nature. Firstly, it is both a public health and an economic crisis which are both unfolding simultaneously. At the same time, its reach is both global and local in nature, with significant uncertainty regarding the availability of a vaccine and how the global economic system will be transformed once the dust settles. The death toll at the time of writing was estimated at above 500,000 with a staggering 12.1 million infections across a total of 213 countries.

The Government, recognizing the existential threat of COVID-19 to our small population, has adopted a triaged approach to responding to the virus, beginning first and foremost with the Public Health Response Plan. In our bid to protect the life of every single Saint Lucian, which is and continues to remain our number one priority, the Government took swift and decisive action to minimize the likelihood of an outbreak and reduce transmission of the virus in our communities by expeditiously implementing border closures, instituting social distancing protocols and curtailing domestic activity. Thankfully, by all accounts these measures have paid off and Saint Lucia has recorded no COVID-19 related mortalities and a low incidence of confirmed cases.



However, while Saint Lucia and the Caribbean region have been lauded for their stellar response to the public health crisis brought about by COVID-19, the region is facing the specter of a severe economic downturn, particularly for tourism dependent countries like Saint Lucia. Prior to the onset of COVID-19, Saint Lucia was poised to record robust economic growth in the region of 3.5 percent in 2020 according to the International Monetary Fund. As a result of COVID-19, this favorable projection is now significantly reversed, with the economy estimated to contract in the range of 8 to 18 percent.

The immediate economic fallout of COVID-19 on Saint Lucia has manifested most noticeably in the complete halting of the tourism industry due to severe outbreaks in Saint Lucia's main trading partners such as the United States and the United Kingdom.

This has subsequently resulted in substantial layoffs and furloughing of employees from the sector as well as other sectors of our economy, which caused anxiety and concern to Saint Lucians. To provide relief to households and businesses, the Government triggered phase two of its response by launching the Social Stabilization Plan. This plan aims to provide social and financial support to both individuals and entities directly impacted by COVID-19.

The Government of Saint Lucia is now transitioning into phase three of its COVID-19 response strategy, which is geared towards stemming the hemorrhaging of our economy and livelihoods of ordinary Saint Lucians. The Economic Recovery and Resilience Plan, is the collective effort of a multi-stakeholder committee, comprising of private and public sectors and civil society, who responded to the call to assist our country in a time when our mutual creativity was most needed. This Plan, which forms the backbone of Saint Lucia's economic response to COVID-19 focuses on safeguarding the lives and livelihoods of every Saint Lucian. The Plan is anchored on six response strategies: three recovery and three resilience strategies.

Budgeted at an estimated cost of \$548 Million, the Economic Recovery and Resilience Plan represents the bold and unwavering commitment of the Government of Saint Lucia to spare no effort in ensuring that we safeguard the development gains that we have made over the past four decades since post-independence. It is a comprehensive multipronged response Plan that seeks to leave no one or sector behind.

The Plan will focus on stimulating Saint Lucia's economy to ensure livelihoods are protected as well as supporting the business sector. This will be done through a menu of response interventions geared at providing liquidity support to both individuals and businesses.

Cognizant of the need to jumpstart the economy, the Government will fast-track an ambitious portfolio of shovel ready capital investment projects which will generate employment and provide incomes to households.

This pandemic has amplified the sheer extent of vulnerabilities that the ordinary Saint Lucian household confronts. The Plan will expand on the number of households currently on Saint Lucia's Public Assistance Programme.

COVID-19 has shown us that the resilience of the private and productive sectors must be a top priority of strategic importance. As such, deliberate focus will be placed on accelerating ongoing public digitization efforts and providing support to the private sector in adopting new technologies.

The Public Health System will be strengthened to respond efficiently and effectively to future health crises such as the COVID-19. This will be achieved by improving primary health care as well as establishing protocols for telemedicine.

Finally, the Plan will focus on disaster risk mitigation and climate change in Saint Lucia. Although largely over shrouded by the ongoing COVID-19 pandemic, the Caribbean region is now in the 2020 hurricane season, one which is projected to be unusually active. The Plan will seek to redouble



resilience building efforts by employing disaster preparedness initiatives.

In closing, let me reassure every Saint Lucian of the Government's concern of the personal impact of COVID-19 on our citizens. However, while this

pandemic is the greatest challenge we are facing as a people, the task before us is not insurmountable and can be achieved if we unite. This is a defining moment for our country and the rest of the world. However, we will emerge out of this crisis, a better and stronger Saint Lucia.

**Hon. Allen M. Chastanet**  
**Prime Minister of Saint Lucia**



# Introduction



**Esther Rigobert**  
Permanent Secretary  
Department of Finance, Economic Growth  
and Job Creation

The COVID-19 pandemic is unleashing damage on all fronts. Beginning as a Public Health crisis in the South Asia region, the virus has reached the shores of every known country in the world, bringing with it an onslaught of death, fear and widespread uncertainty about what the future holds.

It has now evolved from a Global Public Health emergency, to a Human Development crisis, threatening to destroy not just lives, but our way of life, our jobs and livelihoods, our businesses, our industries, and our economy.

No segment of our country is spared this continuing brazen assault of the COVID-19 pandemic. Loss of household income and job security have now thrown many Saint Lucians on the breadline, as businesses are forced to close their doors.

Saint Lucia's Public Health Care System, which has been on the frontline, is having to re-orient its structure to protect lives and to respond to the looming threat of an outbreak, while the pandemic continues to unfold.

Our Education system has also been significantly impacted by the COVID-19 pandemic, with the closure of schools and the urgent need to leverage technology to provide online instruction and learning to our students.

At the same time, significant losses in Government revenue, due to reductions in domestic commercial activity, as well as loss of foreign exchange, has compounded the situation, restricting the Government's ability to respond.

This Economic Recovery and Resilience Plan is the **third of Saint Lucia's three pronged response strategy to combat the COVID-19 pandemic**, and seeks to chart a comprehensive roadmap for the recovery of Saint Lucia. Additionally, the Government embraced the opportunities presented by COVID-19 to accelerate the implementation of some critical reform initiatives.

The Economic Recovery and Resilience Plan primarily seeks to achieve the following six (6) objectives aligned to six (6) pillars:

- 1) **Curtail the impact of both global and domestic economic contraction on the economy, by providing a suite of fiscal policy interventions that will enable private sector business continuity and afford an environment for economic growth and expansion;**
- 2) **Drive economic activity through the deliberate commencement and continuation of public sector capital investment projects;**
- 3) **Protect the poor and most vulnerable segments of the Saint Lucian population and mitigate further deterioration in the quality of life;**
- 4) **Accelerate reforms that will build the resilience of the private and public sectors, by leveraging the adoption of Information and Communications Technology within the productive sectors;**





- 5) Strengthen the Health System to respond to viral outbreaks, and improve the health resilience of the Saint Lucian population; and
- 6) Build the resilience of Saint Lucia to natural disasters and hazards.

Across those six (6) pillars, a total of thirty-two (32) interventions have been developed defined as **“32 Priority Actions to Safeguard lives and livelihoods and to build a More Secure Future for Saint Lucia”**.

This menu of initiatives is expected to assist every segment of the Saint Lucian society to weather the impact of COVID-19. The Plan is

expected to be rolled out over the next three (3) to twelve (12) months.

While the measures presented in the Plan are geared towards stemming the economic contraction and curtailing the impact of the pandemic, the Government remains committed to its medium to long term development goals. To this end, the Government intends to explore avenues for diversification and structural reform of the economy, with the aim of building a more resilient society. All sectors are expected to play a role in this exercise, as it will be for the benefit of all Saint Lucians. Together we can.

**Figure 1:**  
Saint Lucia’ COVID-19 Economic Recovery and Resilience Plan Six Pillars

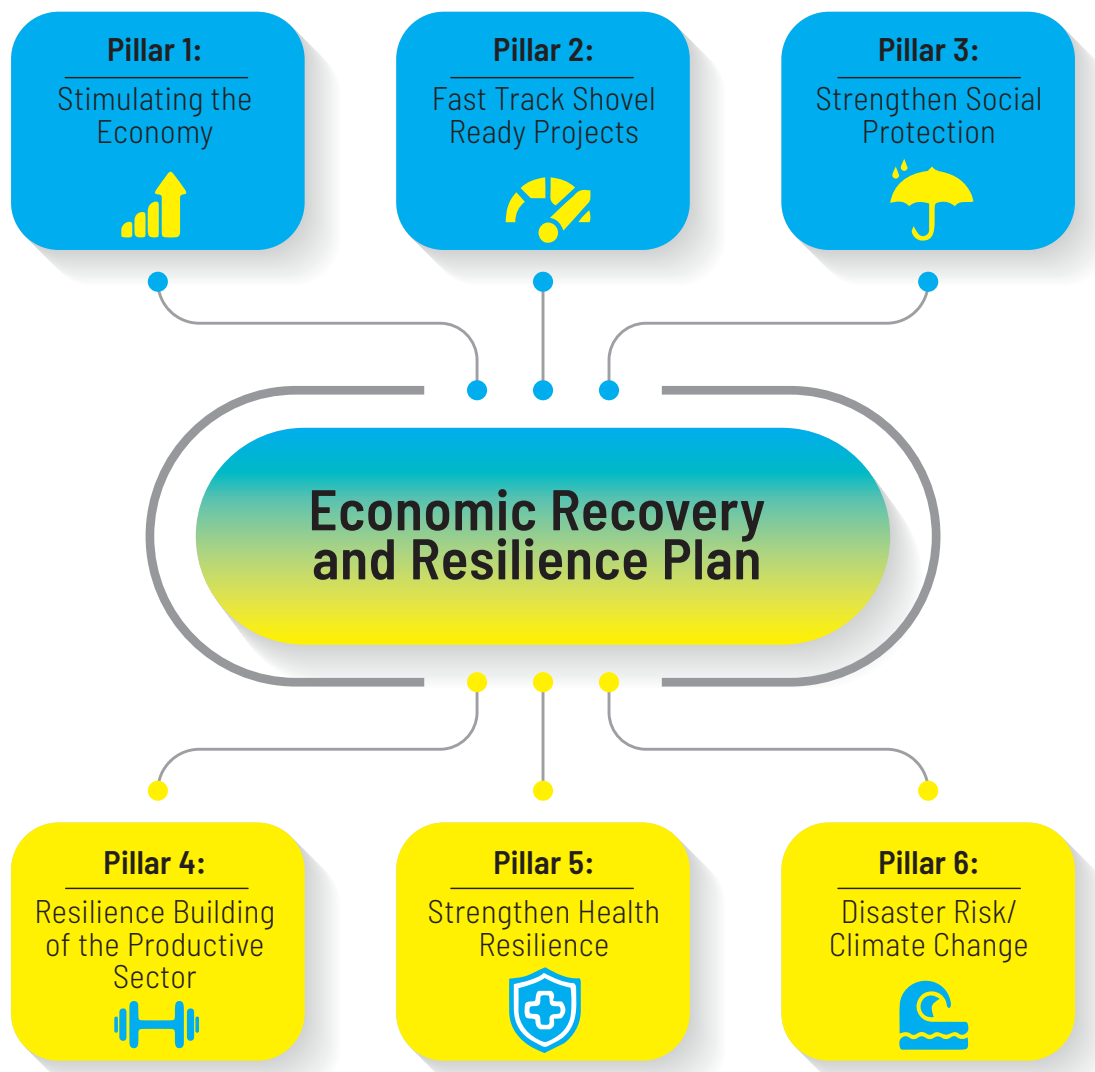
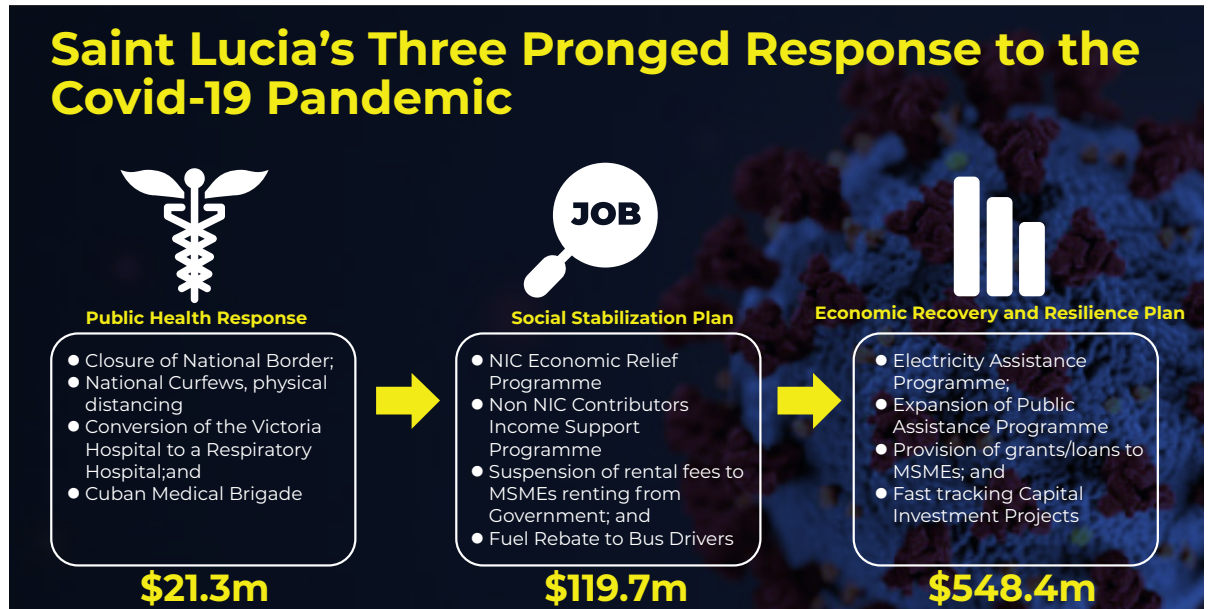


Figure 2:



# Snapshot of Saint Lucia's Economic Recovery and Resilience Plan

## 32 Priority Actions to Safeguard lives and livelihoods and to build a More Secure Future for Saint Lucia

Strategy No	Description	Cost (XCD-Millions)
<b>Recovery Strategies 1 – Stimulating the Economy</b>		34.3
01	Incentivizing the commercial banking sector to lend to Medium, Small and Micro Enterprises.	3.5
02	Provide blended (loan/grant) support to Medium, Small and Micro Enterprises with a focus on food security and adoption of digital technologies.	8.4
03	Waiver of commercial property tax for landlords who extend moratorium or rent reductions to their tenants	2.5
04	Relief for residential rental accommodation	3.6
05	Electricity Assistance Program for persons adversely affected by COVID-19	5.1
06	Waiver of duties on personal hygiene products.	5.0
07	Increase in the subsidy on flour purchased by bakers.	0.3
08	Working Capital Injection Program	5.0
09	Waiver of route-permit license renewal fees for Minibus Operators and Permit Holders	0.9
10	Waiver of duties for the purchase of vehicles for Taxi Operators	TBA
11	Waiver of duties for the purchase of vehicles for Minibus Operators	TBA
<b>Recovery Strategies 2 – Fast Track Shovel Ready Projects</b>		400.2
12	Unrolling of an ambitious portfolio of public sector capital projects and private sector shovel ready projects	396
13	Public Sector Procurement will prioritize local goods and services as a vehicle to stimulate domestic demand with government expenditures.	0.5
14	Accelerate reforms at the Development Control Authority to unlock both public and private sector investment projects pending and improve service delivery	1.2
15	Waiver of import duties to developers who construct five houses or more	TBA
<b>Recovery Strategies 3 – Strengthen Social Protection Systems in Saint Lucia</b>		16.4
16	Expand Saint Lucia's Public Assistance Programme by 1,000 households (2,600 to 3,600)	1.7



17	The provision of COVID-19 cash top-up to households with marginalized persons and persons living with disability cash transfers	0.3
18	Provision of COVID-19 Hygiene Care Packages to indigent, poor and vulnerable households	0.3
19	Micro-Finance loans to households to diversify into Small and Micro Enterprise and cottage industries	0.5
20	Rural Community Small Projects Economic Stimulation Initiative	4.0
21	Duty Free Concessions on vehicles to essential service staff	9.6
<b>Resilience Strategy 1: Resilience Building of the Productive Sector</b>		<b>64.6</b>
22	Increase local output, stimulate domestic demand and strengthening Food Security	7.96
23	Building competitiveness through Digital Transformation and adoption	54.2
24	Supporting the business environment by fast tracking legislation for increasing access to finance by Medium, Small and Micro Enterprises	1.08
25	Supporting business continuity in firms	0.07
26	Labour market enhancement	1.3
<b>Resilience Strategy 2: Strengthen Health Resilience</b>		<b>31.8</b>
27	Building capacity of Primary Care Health Facilities	19.9
28	Mainstreaming care for long term management of COVID-19	7.3
29	Managing and coordinating efforts to limit the impact of COVID-19 on the population	2.0
30	Manage symptoms of diabetic and hypertensive patients and reduce the risk of contracting COVID-19	2.6
31	Increase population access to healthcare – National Health Insurance Scheme	TBA
<b>Resilience Strategy 3: Disaster Risk/Climate Change</b>		<b>1.1</b>
32	Provision of water tanks to vulnerable groups	1.12
		<b>548.43</b>

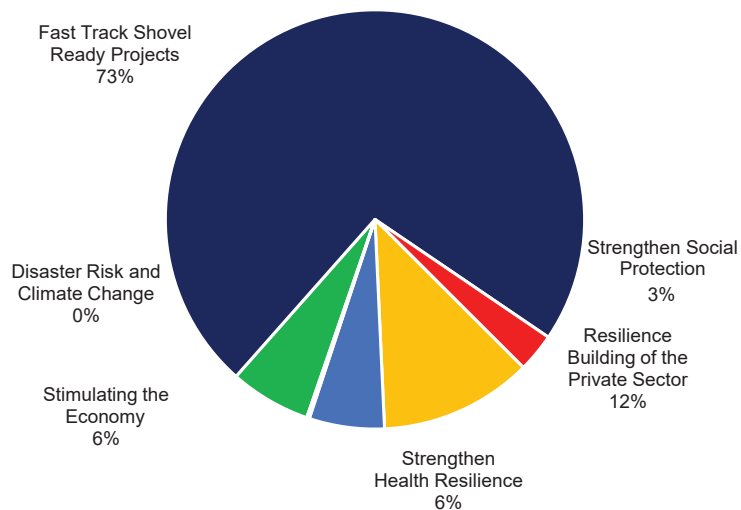




The Government of Saint Lucia is allocating approximately \$548.0 million to the COVID-19 recovery effort, equivalent to an estimated 10.9 percent of GDP. Further, the budget represents a strategic mix of new resources from the global

donor community, as well as a deliberate effort on the part of the Government to repurpose some existing project funding towards providing economic relief to households and the business community.

**Figure 3:**  
Disaggregation of Economic Recovery and Resilience Plan Budget



In our fight against the COVID-19 virus, several agencies and friendly governments have extended support. These include, the World Bank, the United Nations India Development Fund, the United Nations Development Programme, the United Nations Entity for Gender Equality and the Empowerment of Women (UN-Women), United Nations World Food Programme(WFP), the UN Sustainable Development

Goals Fund, United Nations Barbados and the OECS Resident Coordinator’s Office, the United Nations Children’s Fund, the Caribbean Development Bank, the World Bank, the International Monetary Fund (IMF), the Republic of China on Taiwan, the Republic of Korea and the United Kingdom Department for International Development.

Figure 4: List of Donor Partners





# Economic Resilience Pillars

# Pillar 1

# Stimulating the Economy



## Context

Prior to COVID-19, Saint Lucia's economy was on course to achieving a growth rate in the region of 3.5 percent for the year 2020. However, the emergence of the COVID-19 pandemic and the stringent public health measures adopted to contain transmission and flatten the curve are having profound implications for the country's economy. Given the country's heavy reliance on the export of tourism related services which is estimated to contribute 90 percent of the island's foreign exchange in any given year, growth is expected to contract sizeably to the tune of 16.9 percent according to the International Monetary Fund, on account of the complete collapse of the

tourism sector in the near term due to air traffic restrictions and border closures. As a result, Saint Lucia has witnessed the closure of all hotel plants on island and the associated job losses noted by the tourism sector. Additionally, strict domestic containment measures such as 24 hour shutdown are having substantial impact on the economy on both the demand and supply-side. Further, given the uncertainty regarding COVID-19, corporate investment planning is also expected to slow down. To mitigate the imminent impact of the pandemic and to assist the Saint Lucian economy to recover, it is essential that policies be enacted to jumpstart the economy.





**Policy Intervention 1: Incentivizing the commercial banking sector to lend to Medium, Small and Micro Enterprises.**

<b>Objective</b>	<ul style="list-style-type: none"> <li>● Ensure the solvency of otherwise viable MSMEs</li> <li>● Enhance the resiliency of MSMEs</li> <li>● Sustain and eventually improve upon the level of employment</li> </ul>
<b>Intervention</b>	<b><i>Commercial banks receive a 50% waiver of Corporate Income Tax related to earnings from MSME lending</i></b>
<b>Target Audience</b>	<ul style="list-style-type: none"> <li>● Micro and Small enterprises as per Micro and Small Scale Business Enterprises Cap 13.19 and other targeted businesses</li> </ul>
<b>Guidelines and criteria</b>	<ul style="list-style-type: none"> <li>● Commercial banks must indicate willingness to participate in the initiative</li> <li>● Only interest income on MSME lending will be waived under the initiative</li> </ul>
<b>Implementing Agency</b>	Inland Revenue Department
<b>Estimated Cost</b>	\$3.5m
<b>Overall Beneficiary</b>	Households and the business community

**Policy Intervention 2: Provide blended (loan/grant) support to Medium, Small and Micro Enterprises with a focus on food security and adoption of digital technologies.**

<b>Objective</b>	<ul style="list-style-type: none"> <li>● Provide financial support for agro processing and adoption of digital technologies</li> <li>● Provide financial assistance to MSMEs</li> </ul>
<b>Intervention</b>	<b><i>Provide the SLDB with grant funding to allow for lending to MSMEs in the agro-processing and digital industries</i></b>
<b>Target Audience</b>	<ul style="list-style-type: none"> <li>● Micro, Small and Medium Enterprises</li> <li>● Agricultural and Manufacturing Sector</li> </ul>
<b>Guidelines and criteria</b>	<ul style="list-style-type: none"> <li>● Must provide proof of being a duly registered business or member of a business association;</li> <li>● Must have been in continual operation in excess of 12 months;</li> <li>● Must have employees and must show that all necessary deductions such as NIC and PAYE are duly treated</li> </ul>
<b>Implementing Agency</b>	<ul style="list-style-type: none"> <li>● Saint Lucia Development Bank</li> </ul>
<b>Estimated Cost</b>	\$8.4m
<b>Overall Beneficiary</b>	Households and the business community



**Policy Intervention 3: Waiver of commercial property tax for landlords who extend moratorium or rent reductions to their tenants.**

<b>Objective</b>	Improve conditions related to business function
<b>Intervention</b>	<b><i>Allow participating commercial landlords a 50% waiver of property tax for their upcoming payment (2019 or 2020)</i></b>
<b>Target audience</b>	Tenants affected by slowdown in business activity
<b>Guidelines and criteria</b>	<ul style="list-style-type: none"> <li>● Landlords must be duly registered with the IRD</li> <li>● Landlords must show proof of either extending a minimum of a 3 months moratorium of rent payments either April-June or July-September 2020 OR</li> <li>● Landlords must show proof of reducing rental charges for the period April-June or July-September 2020</li> </ul>
<b>Implementing Agency</b>	Inland Revenue Department
<b>Estimated Cost</b>	\$2.5m
<b>Overall Beneficiary</b>	Business community

**Policy Intervention 4: Relief for residential rental accommodation**

<b>Objective</b>	To assist households with the payment of rental expenditure during the COVID-19 pandemic, in cases where they have experienced job losses.
<b>Intervention</b>	<b><i>Allow participating landlords a 20% waiver of property tax for their upcoming payment for 2021 for the reduction of residential house rental from (July to December 2020)</i></b>
<b>Target audience</b>	Landlords with tenants that have been affected by way of job losses as a result of the COVID-19 pandemic.
<b>Guidelines and criteria</b>	<ul style="list-style-type: none"> <li>● Landlords must provide documentation from their tenants verifying that tenants have been adversely affected as a result of COVID-19 in the form of a letter from employer indicating tenant have been laid off or made redundant;</li> <li>● Tenants must fill out the COVID-19 household rental waiver form and submit to the Inland Revenue Department;</li> <li>● Landlords must show proof of reducing the rental cost of the tenant.</li> </ul>
<b>Implementing Agency</b>	Inland Revenue Department
<b>Estimated Cost</b>	\$3.6m
<b>Overall Beneficiary</b>	Households living in rented dwellings (4,300)



### Policy Intervention 5: Electricity Assistance Program for persons adversely affected by COVID-19.

<b>Objective</b>	Assist poor and vulnerable citizens who have been adversely affected (financially) by COVID-19
<b>Intervention</b>	<b>Utilize part of the fuel surcharge (\$0.50) currently levied on the use of diesel fuel to finance part or full payment of electricity bills for affected persons</b>
<b>Target audience</b>	<ul style="list-style-type: none"> <li>● Households on the poverty list</li> <li>● Households verified and approved for support under the NIC Economic Relief Programme</li> <li>● Households verified and approved for support under the Government Income Support Programme for non-contributors to NIC</li> </ul>
<b>Guidelines and criteria</b>	<ul style="list-style-type: none"> <li>● Households must have an active electricity account</li> <li>● Households in receipt of poverty assistance and or income support</li> </ul>
<b>Implementing Agency</b>	Ministry of Equity, Social Justice, Empowerment and Local Government
<b>Estimated Cost</b>	\$5.1m
<b>Overall Beneficiary</b>	Households (approx. 10,000 - 12,500)

### Policy Intervention 6: To reduce the cost of personal hygiene products for the general public.

<b>Objective</b>	To lower the cost of personal hygiene products for the general public.
<b>Intervention</b>	<b>Seek authorization for COTED for the waiver of duties on select personal hygiene products.</b>
<b>Target audience</b>	General populace
<b>Guidelines and criteria</b>	For the period July-December 2020
<b>Implementing Agency</b>	Department of Commerce and Customs and Excise Department
<b>Estimated Cost</b>	\$5.0m
<b>Overall Beneficiary</b>	All households (cost of products should see declines of 10% or more)



**Policy Intervention 7: Increases to the subsidy on flour purchased by bakers.**

<b>Objective</b>	Assist baking community by reducing production cost
<b>Intervention</b>	<b><i>Increase the subsidy on flour used by bakers from \$12 to \$17</i></b>
<b>Target audience</b>	Bakers
<b>Guidelines and criteria</b>	Subject to existing guidelines by the Department of Commerce
<b>Implementing Agency</b>	Department of Commerce
<b>Estimated Cost</b>	\$0.3m
<b>Overall Beneficiary</b>	54 Bakers ~ \$6,000 avg. savings

**Policy Intervention 8: Low cost working capital injection programme**

<b>Objective</b>	Working capital is essential to a company's fundamental financial health and operational success. Proper utilization and sufficient working capital allows businesses to maintain a solid balance between growth, profitability and liquidity. We wish to provide otherwise solvent business with low cost loan financing to assist in meeting their working capital objectives. Entities can receive a maximum of \$250,000
<b>Intervention</b>	<b><i>Working capital loans to be provided to MSMEs affected by COVID-19</i></b>
<b>Target audience</b>	<ul style="list-style-type: none"> <li>● MSMEs who have an annual turnover of less than \$1.0m (assuming &gt;500 firms)</li> </ul>
<b>Guidelines and criteria</b>	<ul style="list-style-type: none"> <li>● Must provide proof of being a duly registered business or member of a business association</li> <li>● Must have been in continual operation in excess of 12 months</li> <li>● Must have employees and must show that all necessary deductions such as NIC and PAYE are duly treated</li> <li>● Must be duly registered with the IRD and not be in arrears to the State</li> </ul>
<b>Implementing Agency</b>	Saint Lucia Development Bank
<b>Estimated Cost</b>	\$5.0m (use of ROCT funds)
<b>Overall Beneficiary</b>	Business community (approximately 350 firms to benefit)



### Policy Intervention 9: Waiver of Route-Permit License Renewal Fees for Minibus Operators and Permit Holders

<b>Objective</b>	To provide minibus operators with a relief from the payment of route-permit renewal license
<b>Intervention</b>	<b><i>Waiver of route-band license/permits for all minibus operators for the next the 2 years</i></b>
<b>Target audience</b>	<ul style="list-style-type: none"> <li>● Minibus Route-Permit holders and those renting permits to ply various routes</li> </ul>
<b>Guidelines and criteria</b>	<ul style="list-style-type: none"> <li>● Proof of ownership of Route-Permit</li> </ul>
<b>Implementing Agency</b>	Division of Transport
<b>Estimated Cost</b>	\$930,000.00
<b>Overall Beneficiary</b>	Approximately 1,300 minibus operators to benefit.

### Policy Intervention 10: Waiver of duties for the purchase of vehicles for Taxi Operator

<b>Objective</b>	To lower the cost of acquiring a vehicle for Taxi Operators
<b>Intervention</b>	<ul style="list-style-type: none"> <li>● <b><i>To provide duty free concession on the purchase of vehicle for Taxi Operators for the next 2 years</i></b></li> </ul>
<b>Target audience</b>	<ul style="list-style-type: none"> <li>● All Taxi Operators that are part of a recognized taxi association</li> </ul>
<b>Guidelines and criteria</b>	<ul style="list-style-type: none"> <li>● Proof of License/Permit to provide taxi services</li> <li>● Registered with the Department of Tourism</li> </ul>
<b>Implementing Agency</b>	Department of Tourism
<b>Estimated Cost</b>	TBA
<b>Overall Beneficiary</b>	All registered taxi operators

### Policy Intervention 11: Waiver of duties for the purchase of vehicles for Minibus Operators

<b>Objective</b>	To lower the cost of acquiring a vehicle for Minibus Operators
<b>Intervention</b>	<ul style="list-style-type: none"> <li>● <b><i>To provide duty free concession on the purchase of vehicle for Minibus Operators for the next 2 years</i></b></li> </ul>
<b>Target audience</b>	<ul style="list-style-type: none"> <li>● Minibus Operators</li> </ul>
<b>Guidelines and criteria</b>	<ul style="list-style-type: none"> <li>● Show evidence of ownership or lease of a route-permit</li> </ul>
<b>Implementing Agency</b>	Division of Transport
<b>Estimated Cost</b>	TBA
<b>Overall Beneficiary</b>	All Minibus Route-Permit Holders (Owner or Leasee)





# Economic Resilience Pillars

# Pillar 2



# Fast-Tracking Shovel Ready Capital Investment Projects



## Context

With the recent launch of the Saint Lucia Medium Term Development Strategy (2020 - 2023), the Government of Saint Lucia has secured a portfolio of an estimated EC\$396M of shovel ready capital investment projects that are funded predominantly by International Financial Institutions at concessionary terms. Additionally, the private sector has also signaled the launching of some projects in the coming months which

augments the national portfolio of shovel ready projects. This has placed Saint Lucia in a very fortunate position, as it provides the opportunity to leverage these projects to respond to the COVID-19 economic fallout by fast tracking the commencement of key projects while accelerating the implementation of ongoing projects, which will simultaneously position Saint Lucia for a strong post-COVID-19 recovery.



## Policy Interventions

### Policy Intervention 12: Unrolling of an ambitious portfolio of public sector capital projects and private sector shovel ready projects

<b>Objectives</b>	<ul style="list-style-type: none"> <li>● Generate over 1500 jobs for local citizens</li> <li>● Increase disposable income for households</li> <li>● Increase sale of local goods, services and materials</li> <li>● Provide financial injection to local economy to stimulate economic activity</li> <li>● Build resilience of local infrastructure</li> </ul>
<b>Intervention</b>	<ul style="list-style-type: none"> <li>● <b>Fast track public sector capital projects in the construction sector</b></li> <li>● <b>Project owners to roll out private sector shovel ready projects</b></li> </ul>
<b>Target Audience</b>	<ul style="list-style-type: none"> <li>● Construction workers</li> <li>● Displaced workers (from other economic sectors)</li> </ul>
<b>Guidelines and Criteria</b>	<ul style="list-style-type: none"> <li>● N/A</li> </ul>
<b>Implementing Agency</b>	<ul style="list-style-type: none"> <li>● Department of Infrastructure</li> <li>● Department of Economic Development</li> <li>● Department of Education</li> <li>● Department of Youth Development and Sports</li> <li>● Water and Sewerage Company Inc (WASCO)</li> <li>● Private Sector project owners</li> </ul>
<b>Estimated Cost</b>	<ul style="list-style-type: none"> <li>● EC\$396M</li> </ul>
<b>Overall Beneficiary</b>	<ul style="list-style-type: none"> <li>● Households and business community</li> </ul>

### Policy Intervention 13: Public Sector Procurement will prioritize local goods and services as a vehicle for stimulating domestic demand with government expenditures.

<b>Objectives</b>	<ul style="list-style-type: none"> <li>● Stimulate domestic demand for local goods and services</li> <li>● Increase sale of local goods and services</li> <li>● Increase local participation in public sector procurement</li> </ul>
<b>Intervention</b>	<ul style="list-style-type: none"> <li>● <b>Promoting the procurement of local goods and services.</b></li> <li>● <b>Government to utilize local businesses for the procurement of goods and services.</b></li> <li>● <b>Government enactment of the Public Procurement and Asset Disposal Act #19 of 2015.</b></li> </ul>
<b>Target Audience</b>	<ul style="list-style-type: none"> <li>● Local manufacturers and suppliers of good and services</li> </ul>
<b>Guidelines and Criteria</b>	<ul style="list-style-type: none"> <li>● Procurement must be done in keeping with established guidelines set by the Department of Finance.</li> <li>● Quality of goods and services procured locally should meet the recommended standards</li> <li>● Company must be a duly registered business and registered with the Inland Revenue Department (IRD)</li> </ul>
<b>Implementing Agency</b>	<ul style="list-style-type: none"> <li>● Department of Finance</li> <li>● Department of Commerce</li> </ul>
<b>Estimated Cost</b>	<ul style="list-style-type: none"> <li>● \$456,300</li> </ul>
<b>Overall Beneficiary</b>	<ul style="list-style-type: none"> <li>● Business community</li> </ul>





**Policy Intervention 14: Accelerate reforms at the Development Control Authority to unlock both public and private sector investment projects pending and improve service delivery**

<b>Objective</b>	<ul style="list-style-type: none"> <li>● Reduce delays and its associated cost during DCA approval process</li> <li>● Improve service delivery of the DCA</li> </ul>
<b>Intervention</b>	<ul style="list-style-type: none"> <li>● <b>Government to accelerate reforms at the DCA</b></li> <li>● <b>DCA to fast track pending applications for approval</b></li> <li>● <b>Capacity building and strengthening of referral agencies</b></li> </ul>
<b>Target Audience</b>	<ul style="list-style-type: none"> <li>● Local businesses</li> <li>● Project owners/Investors</li> </ul>
<b>Guidelines and Criteria</b>	<ul style="list-style-type: none"> <li>● Pending and new applications must have all required documents for processing as stipulated in DCA's "Guide to Obtaining Permission to Develop Land" and the Physical Planning and Development Act</li> </ul>
<b>Implementing Agency</b>	<ul style="list-style-type: none"> <li>● Department of Physical Planning</li> <li>● Development Control Authority (DCA)</li> </ul>
<b>Estimated Cost</b>	<ul style="list-style-type: none"> <li>● EC\$1.2M</li> </ul>
<b>Overall Beneficiary</b>	<ul style="list-style-type: none"> <li>● Business community</li> </ul>

**Policy Intervention 15: Waiver of Import Duties to qualifying Developers who construct five or more houses**

<b>Objective</b>	<ul style="list-style-type: none"> <li>● Stimulate private sector construction</li> <li>● Encourage home ownership</li> </ul>
<b>Intervention</b>	<ul style="list-style-type: none"> <li>● <b>Waiver of import duties on building materials and fixtures</b></li> </ul>
<b>Target Audience</b>	<ul style="list-style-type: none"> <li>● Developers</li> </ul>
<b>Guidelines and Criteria</b>	<ul style="list-style-type: none"> <li>● Company must be a duly registered business and registered with the Inland Revenue Department (IRD)</li> </ul>
<b>Implementing Agency</b>	<ul style="list-style-type: none"> <li>● Department of Housing and Urban Renewal</li> </ul>
<b>Estimated Cost</b>	<ul style="list-style-type: none"> <li>● \$2.5m</li> </ul>
<b>Overall Beneficiary</b>	<ul style="list-style-type: none"> <li>● Developers, business community and local citizens</li> </ul>





# Economic Resilience Pillars

# Pillar 3



# Strengthen Social Protection System in Saint Lucia



## Context

Undoubtedly, the impact of the COVID-19 pandemic will be most felt by individuals and households who are already marginalized and vulnerable, which threatens to plunge them further into poverty and indigence. As per the 2016 Country Poverty Assessment, the monetary poverty head count in Saint Lucia is estimated at 25.1 percent, that is, one in every four persons in Saint Lucia is considered monetary poor. Such a scenario presents a particular vulnerability for Saint Lucia as more households may fall below the poverty line as a result of COVID-19.

To shield these households from this inevitable impact of COVID-19, the Government of Saint Lucia will expand the number of poor households on public assistance by 1,000 from 2,600 to 3,600. This will deal with the chronic under-coverage of social assistance programmes in Saint Lucia as well as the anticipated increase in demand as a result of COVID-19. Priority attention will be given to households that are currently on the waiting list as well as individuals who were unemployed pre-COVID-19 and are now in desperate need of public assistance.



## Policy Interventions

### Policy Intervention 16: Expand Saint Lucia's Public Assistance Programme by 1,000 from 2,600 to 3,600 households

<b>Objective</b>	Saint Lucia has an under coverage of Public Assistance Programme; the initiative will allow Saint Lucia to fully cover all indigent households, while simultaneously responding to the COVID-19 pandemic response to households.
<b>Intervention</b>	<ul style="list-style-type: none"> <li>● <b>To increase the number of indigent, poor and vulnerable households that are on Saint Lucia's Public Assistance Programme by 1,000.</b></li> </ul>
<b>Target Audience</b>	<ul style="list-style-type: none"> <li>● To increase the number of indigent, poor and vulnerable households that are on Saint Lucia's Public Assistance Programme by 1,000.</li> </ul>
<b>Guidelines and criteria</b>	<ul style="list-style-type: none"> <li>● All households will be assessed using the Saint Lucia National Eligibility Test (SL-NET Version 3.0) to ensure accurate targeting;</li> <li>● Households will be contacted by the Welfare Officer who will interview all households;</li> <li>● A Multi-Social Sector Committee will be formed to review the applications and approval; and</li> <li>● A Grievance Mechanism will be developed to provide households a redress mechanism</li> </ul>
<b>Implementing Agency</b>	<ul style="list-style-type: none"> <li>● Ministry of Equity, Social Justice, Empowerment and Local Government</li> </ul>
<b>Estimated Cost</b>	<ul style="list-style-type: none"> <li>● \$1.74m</li> </ul>
<b>Overall Beneficiary</b>	<ul style="list-style-type: none"> <li>● Poor and Indigent Households</li> </ul>

### Policy Intervention 17: The provision of COVID-19 cash top-up to households with marginalized persons and persons living with disability cash transfers

<b>Objective</b>	To support household expenditure with persons living with disabilities and marginalized persons to defray COVID-19 related increased cost.
<b>Intervention</b>	<b>Top up cash transfer amount to households with persons with disabilities and marginalized persons</b>
<b>Target Audience</b>	<ul style="list-style-type: none"> <li>● Increase the Child Disability Grant from \$200 to \$300</li> <li>● Increase the Foster Care Grant from \$200 to \$300; and</li> <li>● Increase the transfer from \$100 to \$200 for persons living with HIV.</li> </ul>
<b>Guidelines and criteria</b>	<ul style="list-style-type: none"> <li>● An automatic increase in transfer amount would apply once the intervention is approved.</li> </ul>
<b>Implementing Agency</b>	<ul style="list-style-type: none"> <li>● Ministry of Equity, Social Justice, Empowerment and Local Government</li> </ul>
<b>Estimated Cost</b>	<ul style="list-style-type: none"> <li>● \$282,900</li> </ul>
<b>Overall Beneficiary</b>	<ul style="list-style-type: none"> <li>● Households with persons living with disability and marginalized persons.</li> </ul>



**Policy Intervention 18: Provision of COVID-19 Hygiene Care Packages to indigent, poor and vulnerable**

<b>Objective</b>	To provide poor and vulnerable households with COVID-19 Hygiene Care Packages to protect them from contracting COVID-19 as well as preventing them from infecting other persons.
<b>Intervention</b>	<ul style="list-style-type: none"> <li>● <b>Supply a total of 6,000 Hygiene Care Packages (Masks, Hand sanitizers, sanitary napkins)</b></li> </ul>
<b>Target Audience</b>	<ul style="list-style-type: none"> <li>● Public Assistance beneficiary clients</li> <li>● Households receiving Child Disability Grant, Foster Care Grants and HIV Grants</li> </ul>
<b>Guidelines and criteria</b>	<ul style="list-style-type: none"> <li>● All households that are receiving public cash transfers;</li> <li>● Additionally, the Hygiene Care Packages will be made available through the Primary Health Care Facility and Local Municipal Offices</li> </ul>
<b>Implementing Agency</b>	<ul style="list-style-type: none"> <li>● Ministry of Equity, Social Justice, Empowerment and Local Government</li> </ul>
<b>Estimated Cost</b>	<ul style="list-style-type: none"> <li>● \$260,000</li> </ul>
<b>Overall Beneficiary</b>	<ul style="list-style-type: none"> <li>● Vulnerable Households</li> </ul>

**Policy Intervention 19: Micro-Finance loans to households to diversify into Small and Micro Enterprise and Cottage Industries**

<b>Objective</b>	To provide poor and non-poor households with micro-finance credit to diversify into Small and Micro and Cottage businesses
<b>Intervention</b>	<ul style="list-style-type: none"> <li>● <b>To supply poor and displaced households with micro credit to diversify into Small and Micro Enterprises and Cottage Businesses</b></li> </ul>
<b>Target Audience</b>	<ul style="list-style-type: none"> <li>● All poor households and persons who have been displaced as a result of COVID-19</li> </ul>
<b>Guidelines and criteria</b>	<ul style="list-style-type: none"> <li>● Poor households will be eligible using the Saint Lucia National Eligibility Test (SL-NET)</li> <li>● Persons applying for non-poor micro-credit pathway will have to prove that they were laid off;</li> <li>● Business development training will be provided to all applicants.</li> </ul>
<b>Implementing Agency</b>	<ul style="list-style-type: none"> <li>● Ministry of Equity, Social Justice, Empowerment and Local Government</li> </ul>
<b>Estimated Cost</b>	<ul style="list-style-type: none"> <li>● \$500,000</li> </ul>
<b>Overall Beneficiary</b>	<ul style="list-style-type: none"> <li>● Displaced Households</li> </ul>



**Policy Intervention 20: Rural Community Small Projects Economic Stimulation Initiative**

<b>Objective</b>	To stimulate rural economic activity through a series of small construction projects geared at renovating existing community facilities, which will translate into increased income support to rural households.
<b>Intervention</b>	<ul style="list-style-type: none"> <li>● <b>To provide small construction projects to micro contractors to stimulate economic activity and income in rural communities geared towards repairing community infrastructure.</b></li> </ul>
<b>Target Audience</b>	<ul style="list-style-type: none"> <li>● Persons displaced as a result of COVID-19</li> </ul>
<b>Guidelines and criteria</b>	<ul style="list-style-type: none"> <li>● Applicants must have skills in related field; and</li> <li>● Bidding process will apply</li> </ul>
<b>Implementing Agency</b>	<ul style="list-style-type: none"> <li>● Department of Economic Development, Transport and Civil Aviation – Constituency Development Project</li> </ul>
<b>Estimated Cost</b>	<ul style="list-style-type: none"> <li>● \$4.0m</li> </ul>
<b>Overall Beneficiary</b>	<ul style="list-style-type: none"> <li>● Households displaced as a result of COVID-19</li> </ul>

**Policy Intervention 21: Duty Free Concessions on vehicles to essential services staff**

<b>Objective</b>	To lower the cost of acquiring a vehicle for frontline essential public service officers by reducing the duties on purchase of vehicles, to assist officers to respond to national emergencies.
<b>Intervention</b>	<ul style="list-style-type: none"> <li>● <b>To provide duty free concession on the purchase of vehicle for frontline essential public service officers</b></li> </ul>
<b>Target Audience</b>	<ul style="list-style-type: none"> <li>● Essential public service officers (Nurses, Police and Fire Officers)</li> </ul>
<b>Guidelines and criteria</b>	<ul style="list-style-type: none"> <li>● Essential public service officer who are employed for more than 5 years in the public service;</li> <li>● Relief applies only to new vehicle purchase;</li> <li>● Vehicle registration must be in applicant's name; and</li> <li>● One application per eligible individual</li> </ul>
<b>Implementing Agency</b>	<ul style="list-style-type: none"> <li>● Department of Finance</li> </ul>
<b>Estimated Cost</b>	<ul style="list-style-type: none"> <li>● TBC</li> </ul>
<b>Overall Beneficiary</b>	<ul style="list-style-type: none"> <li>● Essential public service officers (Nurses, Police and Fire Officers)</li> </ul>

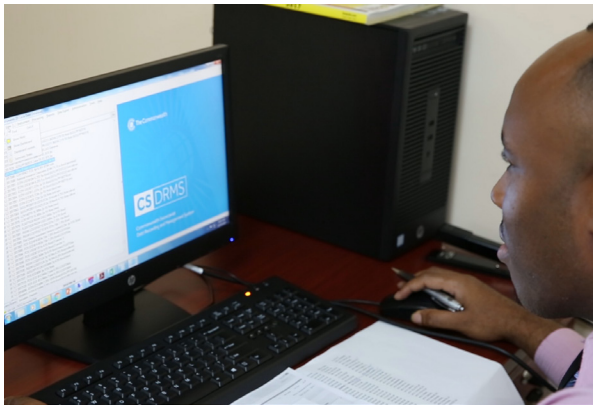




# Pillar 4



# Resilience Building of the Productive Sector



## Context

COVID-19 has shown us that the resilience of the private and productive sectors must be a top priority of strategic importance. In an effort to strengthen the domestic economy, Government has launched the “Love Saint Lucia Campaign” to increase local output and local purchases of domestic products. In the area of agriculture, Government will be strengthening food security by providing support to fishers, livestock and crop farmers through a comprehensive programme of fuel subsidy, provision of inputs, land preparation and pest control.

In addition, upcoming Government projects will provide the environment for widespread adoption of technologies for MSMEs, equipping workers with digital skills and supporting ongoing efforts in strengthening the infrastructure in place for e-commerce. These interventions will strengthen business processes and support business continuity.

The Government will also be working with the productive sectors to secure jobs as much as possible. A comprehensive labour enhancement





program will be designed to assist displaced workers in gaining employment in other sectors such as construction, manufacturing and agriculture. Training and certification of approximately 900 workers through the TVET program will end by December 2021. In an effort to reduce the pressure that will be

placed on the job market from the new entrants, a National School Leavers Program will be launched. Some of the areas to include: volunteerism, personal resilience through training and career guidance, youth entrepreneurship, service clubs enrolments and other employment support initiatives.

## Policy Interventions

### Policy Intervention 22: Increase local output, stimulate domestic demand and strengthen Food Security to support farmers and fishers

<b>Objective</b>	To create a thriving local economy by maximizing the potential of local businesses and increasing their market share in the local domestic space
<b>Intervention</b>	<ul style="list-style-type: none"> <li>● <b>Increase Output and Stimulate Local Demand - through the: "Love Saint Lucia Campaign"</b> <ul style="list-style-type: none"> <li>◆ Incentivize the creation of new products such as vitamins &amp; wholesome snacks</li> <li>◆ Provide support to our local businesses in sourcing markets both locally and externally.</li> <li>◆ Implement quality standards in the production process</li> <li>◆ Provide supplies to households for home gardening through the provision of inputs</li> </ul> </li> </ul> <p><b>Date of Commencement: September 2020</b></p> <ul style="list-style-type: none"> <li>● <b>Strengthening Food Security - through an injection of \$7.2m to support farmers and fishers through provision of inputs and fuel subsidy</b> <ul style="list-style-type: none"> <li>◆ Support to Fishers: <ul style="list-style-type: none"> <li>◆ Over 200 boat owners to be eligible for fuel subsidy</li> <li>◆ Provision of very high frequency radios to 70 fishers and payment of radio fees to NTRC for 200 Fishers</li> <li>◆ Support for Acqua Farmers and Seamoss Farmers</li> </ul> </li> <li>◆ Support to livestock farmers to increase production through the provision of Feed and inputs: <ul style="list-style-type: none"> <li>◆ 357 Swine Farmers to benefit</li> <li>◆ Support to 50 Broiler Farmers &amp; 500 small ruminant farmers</li> </ul> </li> </ul> </li> <li>● <b>2500 Crop Farmers with necessary inputs to cultivate short term crops</b></li> </ul> <p><b>Date of Commencement: September 2020</b></p>
<b>Target Audience</b>	● Agricultural Sector
<b>Guidelines and criteria</b>	● Agricultural Sector
<b>Implementing Agency</b>	<ul style="list-style-type: none"> <li>● Ministry of Commerce</li> <li>● Ministry of Agriculture</li> </ul>
<b>Estimated Cost</b>	● \$7.96m
<b>Overall Beneficiary</b>	● Business community and households



**Policy Intervention 23: Building competitiveness through Digital Transformation and adoption**

<b>Objective</b>	To transform Saint Lucia's economy through digitization
<b>Intervention</b>	<ul style="list-style-type: none"> <li>● <b>Provide workforce ready digital skills to prepare individuals to participate in digitally enabled professions</b></li> <li>● <b>Support to purchase digital devices and associated digital content to support e-learning for vulnerable students without the ability to afford</b></li> <li>● <b>Undertake a programme to facilitate the adoption of technologies and associated tools for businesses</b></li> <li>● <b>Provide support through digitization efforts to allow MSMEs to have an online presence in an effort to facilitate e-commerce.</b></li> <li>● <b>Commencement of e-transactions legislation</b></li> </ul> <p><b>Date of Commencement: October 2020</b></p>
<b>Target Audience</b>	● Individuals and businesses
<b>Guidelines and criteria</b>	● For Individuals – enrolment guidelines in skills training will be provided
<b>Implementing Agency</b>	<ul style="list-style-type: none"> <li>● Department of Public Service</li> <li>● Ministry of Commerce</li> <li>● Department of Finance - NCPC</li> </ul>
<b>Estimated Cost</b>	● EC\$54.16m
<b>Overall Beneficiary</b>	● Business community and households

**Policy Intervention 24: Supporting the business environment by fast tracking legislation for increasing access to finance by SMEs**

<b>Objective</b>	Provide businesses with the opportunity to access financing using business movable assets such as equipment, receivables and inventory.
<b>Intervention</b>	<ul style="list-style-type: none"> <li>● <b>Fast track legislation for the Security Interest in Movable Properties &amp; Insolvency</b></li> <li>● <b>Procure the design and implementation for the online Collateral Registry</b></li> </ul> <p><b>Date of completion for Legislation: September 2020</b> <b>Date of completion for Collateral Registry: August 2021</b></p>
<b>Target Audience</b>	<ul style="list-style-type: none"> <li>● Small and Micro Businesses</li> <li>● Individuals</li> </ul>
<b>Guidelines and criteria</b>	● Lending criteria as set out by the financial institutions and legislation



<b>Implementing Agency</b>	<ul style="list-style-type: none"> <li>● Department of Finance - NCPC</li> <li>● Registry of the High Court</li> <li>● Financial Institutions</li> </ul>
<b>Estimated Cost</b>	<ul style="list-style-type: none"> <li>● EC\$1.08m</li> </ul>
<b>Overall Beneficiary</b>	<ul style="list-style-type: none"> <li>● Individuals and business community</li> </ul>

### Policy Intervention 25: Supporting Business Continuity in firms

<b>Objective</b>	To provide assistance to business to support their efforts to build business continuity in their operations
<b>Intervention</b>	<ul style="list-style-type: none"> <li>● <b>Provide Technical Assistance to firms in supporting business continuity through – Supply Chain Mapping Exercise through Export Saint Lucia and Ministry of Commerce</b></li> <li>● <b>Provide Technical Assistance &amp; Capacity Building in building business resilience and the adoption of productivity tools</b></li> </ul> <p><b>Date of commencement: October 2020</b></p>
<b>Target Audience</b>	<ul style="list-style-type: none"> <li>● Business must qualify as a Small and Micro Enterprise</li> </ul>
<b>Guidelines and criteria</b>	<ul style="list-style-type: none"> <li>● Ministry of Commerce</li> <li>● Exports Saint Lucia</li> <li>● Department of Finance - NCPC</li> </ul>
<b>Estimated Cost</b>	<ul style="list-style-type: none"> <li>● EC\$70,000</li> </ul>
<b>Overall Beneficiary</b>	<ul style="list-style-type: none"> <li>● MSMEs</li> </ul>



## Policy Intervention 26: Labour Market enhancement

<b>Objective</b>	To support initiatives that will create employment and provide job opportunities to displaced workers
<b>Intervention</b>	<ul style="list-style-type: none"> <li>● <b>Approximately 900 individuals are expected to be enrolled in TVET by December 2021</b> <ul style="list-style-type: none"> <li>◆ Training and certification of workers</li> </ul> </li> <li>● <b>Matching displaced workers to jobs available in sectors where jobs are being created such as Manufacturing, Construction and Agro-Processing.</b></li> <li>● <b>National Program for Young School Leavers to ensure they are engaged productively to include national service, volunteerism, youth entrepreneurship and other employment initiatives.</b></li> </ul>
<b>Target Audience</b>	<ul style="list-style-type: none"> <li>● Displaced Workers</li> <li>● Young School Leavers</li> </ul>
<b>Guidelines and criteria</b>	<ul style="list-style-type: none"> <li>● Guidelines will be based on the specific programs</li> </ul>
<b>Implementing Agency</b>	<ul style="list-style-type: none"> <li>● Labour Department</li> <li>● Department of Education</li> <li>● Department of Equity</li> <li>● Office of the Prime Minister</li> <li>● Department of Finance</li> <li>● Department of Economic Development</li> <li>● Department of Youth and Sports</li> </ul>
<b>Estimated Cost</b>	<ul style="list-style-type: none"> <li>● EC\$1.3m</li> </ul>
<b>Overall Beneficiary</b>	<ul style="list-style-type: none"> <li>● Displaced Workers and Young School Leavers</li> </ul>



# Economic Resilience Pillars

# Pillar 5



# Build Resilience into the Health Sector



## Context

By all accounts the Public Health response has been commendable. The Office of the Chief Medical Officer and the many frontline workers who put their lives on the line daily have made sacrifices that we as a country can never repay.

COVID-19 has revealed our personal human strengths but it has also uncovered gaps in our Public Health system that need urgent attention. This pillar seeks to remedy some of the gaps, which will in turn build a more resilient health sector for Saint Lucia.

Although COVID-19 is predominantly a physical health crisis it also has the potential to trigger a mental health crisis. The psychological impact on the population is a concern as our citizen's experience growing anxiety regarding their health and that of their loved ones. Other factors, such as the loss of family members in the diaspora and loss of livelihoods have had an adverse impact on many individuals. As such, the Government, through various agencies including the Ministry of Health, will be ramping up psychosocial support to all Saint Lucians impacted by COVID-19.



## Policy Intervention 27: Building capacity of Primary Health Care Facilities

<b>Objective</b>	<ul style="list-style-type: none"> <li>● Building capacity in our Primary Health Care Services to reduce the strain on our Main facilities – Owen King European Union Hospital and St. Jude Hospital. The two main projects undertaken to build that capacity are Dennery Polyclinic and Castries Health Centre;</li> <li>● Enhance the resiliency of our health care services and build capacity in various community</li> <li>● Improve the Castries Health Centre to accommodate the Cuban eye clinic and sexually transmitted disease clinic</li> </ul>
<b>Intervention</b>	● <b>Improve Health Care Facilities</b>
<b>Target audience</b>	Employment generation and for the Health outcomes for the Dennery, Castries and surrounding communities
<b>Guidelines and criteria</b>	● N/A
<b>Implementing Agency</b>	PCU and Department of Economic Development, Transport and Civil Aviation
<b>Estimated Cost</b>	\$20m
<b>Overall Beneficiary</b>	<ul style="list-style-type: none"> <li>● Construction workers (increased employment)</li> <li>● Community residents (access to improved health care)</li> </ul>

## Policy Intervention 28: Mainstreaming care for long term management of COVID-19

<b>Objective</b>	Completion of the Respiratory Hospital; Isolation Centres for the North and South of Saint Lucia.
<b>Intervention</b>	<b><i>These facilities will strengthen the country's COVID-19 Health response and enable long term management of the virus</i></b>
<b>Target audience</b>	● Residence from targeted communities
<b>Guidelines and criteria</b>	● N/A
<b>Implementing Agency</b>	Ministry of Health and Wellness
<b>Estimated Cost</b>	\$7.3m
<b>Overall Beneficiary</b>	<ul style="list-style-type: none"> <li>● Construction workers (increased employment)</li> <li>● Community residents (access to improved health care)</li> </ul>



**Policy Intervention 29: Managing and Coordinating efforts to limit the impact of COVID-19 on the population**

<b>Objective</b>	Manage and coordinate efforts to limit the spread of the virus and the impact of COVID-19 on the populace
<b>Intervention</b>	<ul style="list-style-type: none"> <li>● <b>Targeted approach for purchasing of PPE and COVID-19 tests;</b></li> <li>● <b>Public Education Campaign and Protocols developed;</b></li> <li>● <b>Mental Health Campaign;</b></li> <li>● <b>Increase compliance and digitization of vaccination;</b></li> <li>● <b>A streamlined approach to Telemedicine</b></li> </ul>
<b>Target audience</b>	Entire population
<b>Guidelines and criteria</b>	<ul style="list-style-type: none"> <li>● Special guidelines to apply for each intervention</li> </ul>
<b>Implementing Agency</b>	Ministry of Health and Wellness
<b>Estimated Cost</b>	\$2m
<b>Overall Beneficiary</b>	Entire Population

**Policy Intervention 30: Manage symptoms of Diabetic and Hypertensive patients and reduce the risk of contracting COVID-19**

<b>Objective</b>	<ul style="list-style-type: none"> <li>● To assist individuals to manage their health conditions (Diabetes and Hypertension) to reduce susceptibility to COVID-19</li> </ul>
<b>Intervention</b>	<ul style="list-style-type: none"> <li>● <b>Mandatory self-management through the Stanford Self-Management program</b></li> <li>● <b>Provision of testing strips and glucometers to Diabetics</b></li> <li>● <b>Home care visits to provide counselling and direction on the management of symptoms</b></li> </ul>
<b>Target audience</b>	<ul style="list-style-type: none"> <li>● Diabetics and Hypertensive registered patients</li> </ul>
<b>Guidelines and criteria</b>	<ul style="list-style-type: none"> <li>● Must be a registered Diabetic or Hypertensive patient</li> </ul>
<b>Implementing Agency</b>	Ministry of Health and Wellness
<b>Estimated Cost</b>	\$2.6m
<b>Overall Beneficiary</b>	Households (approx. 10,000 - 12,500)





## Policy Intervention 31: Increase population access to Healthcare – National Health Insurance

41

BUILD RESILIENCE INTO  
THE HEALTH SECTOR

<b>Objective</b>	The implementation of National Health Insurance will increase access to health services for the poor and financially vulnerable in society in the first phase and provide access to all citizens in the later phases
<b>Intervention</b>	● <b><i>Implement the National Health Insurance on a phased basis</i></b>
<b>Target audience</b>	Entire population
<b>Guidelines and criteria</b>	● Premiums for poor and vulnerable to be borne by the State
<b>Implementing Agency</b>	Ministry of Health and Wellness
<b>Estimated Cost</b>	TBC
<b>Overall Beneficiary</b>	Entire Population



SAINT LUCIA NATIONAL  
COVID-19 ECONOMIC  
RECOVERY AND  
RESILIENCE PLAN

# Economic Resilience Pillars



# Pillar 6



# Disaster Risk, Mitigation and Climate Change



## Context

Saint Lucia and the Caribbean is now in yet another Atlantic Hurricane season. This exposes the country to the threat of destruction to infrastructure, crops, livestock and loss of human life. In light of this reality, this Economic Recovery and Resilience Plan took into consideration interventions to help mitigate the impact of climate change and associated disasters. Additionally, preliminary forecast from the National Oceanic and Atmospheric Administration (NOAA)

is suggesting an above normal 2020 Atlantic Hurricane Season, with thirteen (13) to nineteen (19) named storms, of which six (6) to ten (10) are expected to develop into hurricanes, and three (3) to six (6) are expected to become major storms. Given the specter of a very active hurricane season, it is essential that disaster preparedness activities continue while combating COVID-19.



## Policy Interventions

### Policy Intervention 32: Provision of 800 Water Tanks to Vulnerable Communities and Essential Public Services

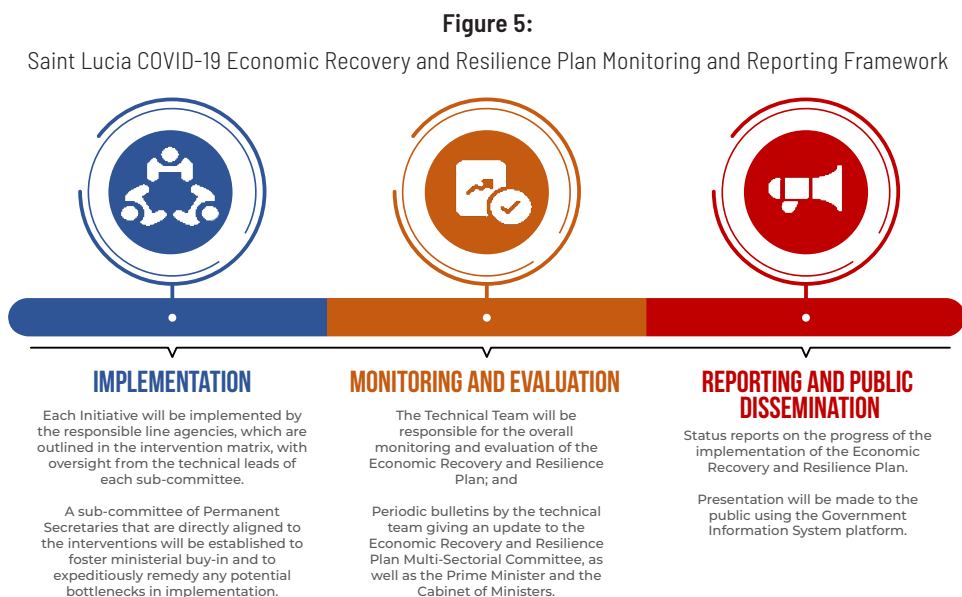
<b>Objective</b>	To provide vulnerable communities and essential public service agencies with 1,000 gallon water tanks to ensure water security in the event of a natural disaster
<b>Intervention</b>	<i>Donate 1,000 gallon water tanks to various agencies representing marginalized groups as well as the Saint Lucian farming community.</i>
<b>Target audience</b>	<ul style="list-style-type: none"> <li>• Designated National Hurricane Shelter,</li> <li>• Public Health Facilities (Churches and Community Centers),</li> <li>• Marginalized Groups; and</li> <li>• Farming Community</li> </ul>
<b>Guidelines and criteria</b>	<ul style="list-style-type: none"> <li>● All agencies that fall under above mentioned categories will be eligible to receive water tanks</li> </ul>
<b>Implementing Agency</b>	Department of Economic Development, Transport and Civil Aviation – Disaster Vulnerability Reduction Project
<b>Estimated Cost</b>	\$1.12m
<b>Overall Beneficiary</b>	Vulnerable communities.





Of critical importance is the timely implementation of the priority interventions that comprise the Saint Lucia COVID-19 Economic Recovery and Resilience Plan. Moreover, given the dynamic nature of the COVID-19 pandemic and the continued unfolding risk and impact on Saint Lucia and the global economy it is imperative

that the implementation of the plan be as nimble and responsive as possible. Therefore, a three (3) phased approach is developed to ensure effective implementation and monitoring of the Economic Recovery and Resilience Plan as outlined in figure 5 below.



# Acknowledgement



The Government of Saint Lucia and in particular the Department of Finance, Economic Growth and Job Creation and the Department of Economic Development, Transport and Civil Aviation would like to thank the Multi-Sectoral committee, which comprised stakeholders from the private and public sectors, in addition to civil society for their

commitment and dedication to the development of the Plan. This effort was spearheaded by the Economic Recovery and Resilience core technical team, who worked tirelessly over the course of three months to see this Plan to fruition. The Government and people of Saint Lucia remain eternally grateful for their hard work and perseverance.



<b>Multi-Stakeholder Committee</b>	
<b>Mr. Richard Peterkin</b> Grant Thornton	<b>Mrs. Yvonne Agard</b> Saint Lucia Coalition of Services
<b>Mrs. Paula James</b> Saint Lucia Manufacturing Association	<b>Mrs. Loretta Louis-Hinds</b> Saint Lucia Industrial and Small Business Association
<b>Mr. Brian Louisy</b> Saint Lucia Chamber of Commerce	<b>Ms. Sabina Valmont</b> <b>Southern Business Association</b>
<b>Mrs. Karolin Troubetzkoy</b> St Lucia Hotel and Tourism Association	<b>Mr. Gerard Bergasse</b> National Competitiveness and Productivity Council
<b>Mr. Noorani Azeez</b> Saint Lucia Hotel and Tourism Association	<b>Mr. Nicholas Barnard</b> National Competitiveness and Productivity Council
<b>Mr. Waren Montgomery</b> Saint Lucia Insurance Council	<b>Mr. James Perineau</b> Saint Lucia's Employers Federation
<b>Mr. Johann Harewood</b> National Workers Union	<b>Pastor Waltrude Dantes</b> Evangelical Church of the West Indies - ECWI
<b>Mr. Medford Francis</b> Saint Lucia Bankers Association	<b>Ms. Steffi Alfred</b> Saint Lucia National Youth Council
<b>Mr. Brian Samuel</b> St Lucia Credit Union Cooperative League	<b>Mr. Vincent Boland</b> Saint Lucia Development Bank
<b>Mrs. Carol Mangal</b> Saint Lucia Bankers Association	<b>Mr. Thaddeus M. Antoine</b> Saint Lucia Bar Association
<b>Mrs. Andrea St Rose</b> Institute of Chartered Accountant of the Eastern Caribbean	<b>Dr. Alison Gadjar</b> Chamber of Commerce
<b>Mrs. Renee St Rose</b> Saint Lucia Bar Association	<b>Ms. Karen Fontenelle</b> Chamber of Commerce
<b>Mr. Julian Monrose</b> Trade Union Federation	<b>Ms. Siobhan C. James-Alexander</b> Chamber of Commerce
<b>Ministry of Infrastructure</b> Mr. Ivor Daniel - Permanent Secretary	<b>Department of Finance</b> Ms. Esther Rigobert - Director of Finance (AG) Mrs. Nadia Wells-Hyacinth - Director FA Mrs. Fiona Hinkson - Director NCPC Mr. Janai Leonce - Chief Economist
<b>Department of Economic Development</b> Mr. Claudius Emmanuel - Permanent Secretary Mr. Tommy Descartes - Chief Economist	<b>Performance Management Development Unit</b> Ms. Charon Gardner - Head Mr. Mandille Alcee - Deputy Head
<b>Ministry of Commerce</b> Mrs. Barbara Innocent-Charles - Director SEDU Ms. Ruthanne Phillip - C&I Officer Mr. Esli Lafeuille - C&I Officer Mr. Bonaventure Henry - C&I Officer	<b>Department of Tourism</b> Ms. Donnalyn Vittet - Permanent Secretary Mrs. Margaret Ann Adams - Tourism Officer
<b>Ministry of Equity</b> Mrs. Velda Joseph - Permanent Secretary	<b>Ministry of Agriculture</b> Mr. Felicien Barrymore - Permanent Secretary Dr. Auria King - Director of Agriculture Services



# Technical Planning Team



**Ms. Esther Rigobert**  
Permanent Secretary (A.g.)  
Department of Finance  
Economic Recovery  
and Resilience Plan - Lead



**Mr. Claudius Emmanuel**  
Permanent Secretary  
Department of Economic  
Development, Transport  
and Civil Aviation  
Economic Recovery and  
Resilience Plan - Co-Lead



**Mr. Janai Leonce**  
Chief Economist - Research  
and Policy Unit  
Department of Finance  
Technical Lead for Pillar 1:  
Stimulating the Economy



**Mr. Mandille Alcee**  
Deputy Head - Performance  
Management Delivery Unit  
Office of the Prime Minister  
Technical Lead Pillar 2:  
Fast Tracking Shovel Ready  
Investment Projects



**Mr. Tommy Descartes**  
Chief Economist  
Department of Economic  
Development, Transport  
and Civil Aviation  
Technical Lead for Pillar 3:  
Strengthening Social Protection  
Systems in Saint Lucia



**Mrs. Fiona Hinkson**  
Director  
National Competitiveness and  
Productivity Council  
Department of Finance  
Technical Lead for Pillar 4:  
Resilience Building of the  
Productive Sector



**Ms. Charon Gardner-Hippolyte**  
Head - Performance  
Management Delivery Unit  
Office of the Prime Minister  
Technical Lead for Pillar 5:  
Building Resilience into  
the Health Sector



**Mrs. Nadia Wells Hyacinth**  
Director Financial  
Administration  
Department of Finance  
Technical Lead for Pillar 6:  
Climate Change and  
Disaster Risk





# Appendices:



# Overview of Saint Lucia's COVID-19 Response Strategy

## Phase 1: National Public Health Response

Strategy No	Description	Cost (XCD-Millions)
01	Construction of an Isolation Unit at the Owen King European Union Hospital and South of the Island	2.7
02	Conversion of the Victoria Hospital to a dedicated Respiratory Hospital	4.1
03	Establishment of five (5) respiratory clinics across the island	TBA
04	Over 100 Cuban nurses and doctors procured to support the COVID-19 pandemic health response	3.3
05	Establishment of Quarantine Facilities	2.6
06	Procurement of Personnel Protective Equipment (PPE)	5.0
07	Procurement of Laboratory Equipment	1.7
08	Health Promotion and Communication Strategy	0.08
09	Emergency Medical Services	0.19
10	Sanitizing Supplies	0.78
11	Pharmaceutical Supplies	0.60
12	Frontline Response	0.25
		21.3



## Phase 2: Social Stabilization Plan

Strategy No	Description	Cost (XCD-Millions)
01	Unemployment Relief – Saint Lucia National Insurance Corporation to provide 3 months of subsistence Allowance to persons who would have lost their jobs as a result of COVID-19.	65.0
02	Provision of unemployed subsistence allowance of \$500.00 monthly for 3 months for Non-NIC contributors	16.0
03	Extension of Corporate Tax Instalment Payments by 1 month	16.8
04	Extension of time for filing of income tax returns by 1 month	
05	Waiver of interest and penalties on all tax types for March 2020	3.0
06	Tax credit to companies and other entities which retain at least 30 percent of their staff	
07	Moratorium on Bank and Credit Union loan repayments (principal and interest) for 3 to 6 months	
08	Government seeking relief from Financing Partners	
09	Government in discussion with the insurance companies to provide assistance for persons impacted by COVID-19	
10	Engagement with utility companies to assist those who have suffered job losses as a result of COVID-19	
11	Commencement of Duty Free Barrel concessions June 2020 to January 2021	3.0
12	Concessions to companies that produce sanitization and health care products	5.0
13	Suspension of rental payment for six (6) months for Micro, Small and Medium Enterprises renting from Government	
14	Fuel Rebate to the Omni-Bus Operators	1.1
15	Government to increase purchase from local farmers and fisher folk	
16	Government assistance to local entrepreneurs producing the following; hand sanitizers, liquid soap, rubbing alcohol, face mask, disposable gloves, bathroom tissue and paper towel	7.4
17	Incentives to support the manufacturing of household cleaning items, bleach, soap powder, disinfectants, and liquid soap	3.4
18	Government to procure medicine/supplements for distribution	
19	Enactment of price gouging legislation	
20	National Meal Programme	1.0
		<b>119.7</b>



# Moving from Pandemic to Recovery with Collective Action

